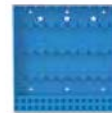
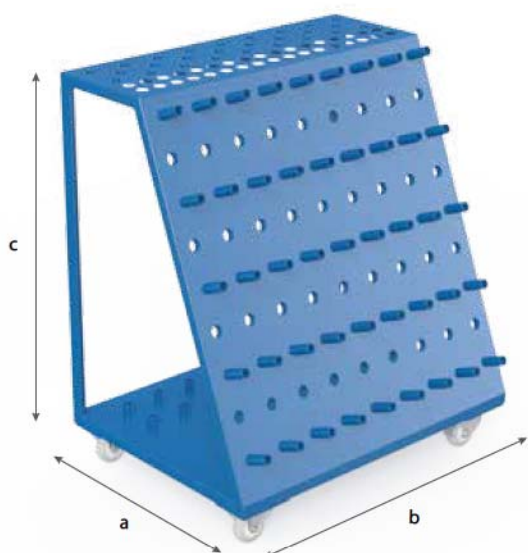




	Page
Tool Cart / Tool Cart Compact	380
Toolwall / Modular Tool Panel	382
Protective Welding Wall / Ground Connection	384
Brush / Burner Holder	386
Allen Wrench	388
Shipping Bracket	390



Tool Cart



280910



280915

Description:

Tool Cart, offers sufficient space for your Siegmund accessories. Your tools are handy, and you always keep track of them. Large squares are practically and safely stored in the inside space. Due to the casters, the tools are quickly transported to different points of use.



Tool Cart - varnished

Length: (a)	Width: (b)	Height: (c)	Weight:	Item No.
660 mm	900 mm	1040 mm	50,00 kg	2-280910 •

Tarp - for Tool Cart 280910

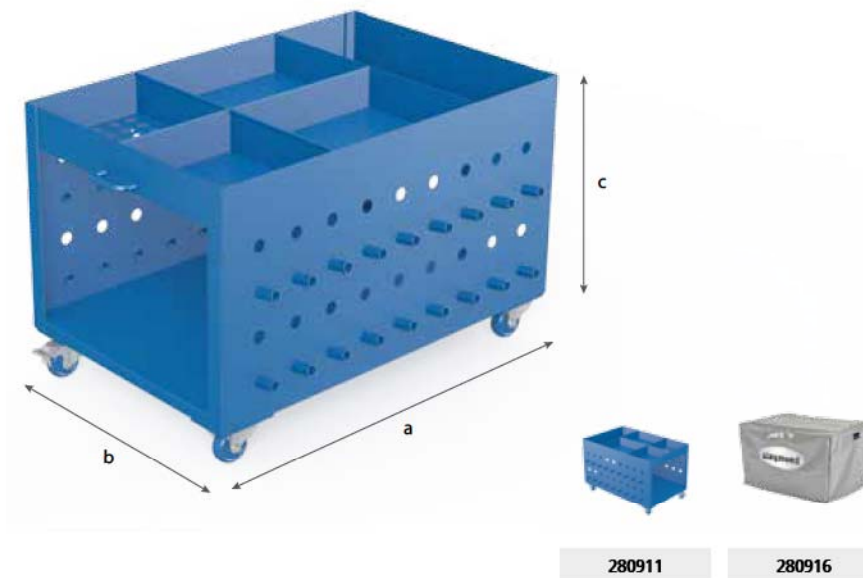
2-280915 •

● = Stock item / ○ = Item is made to order

Tool Cart Compact

Description:

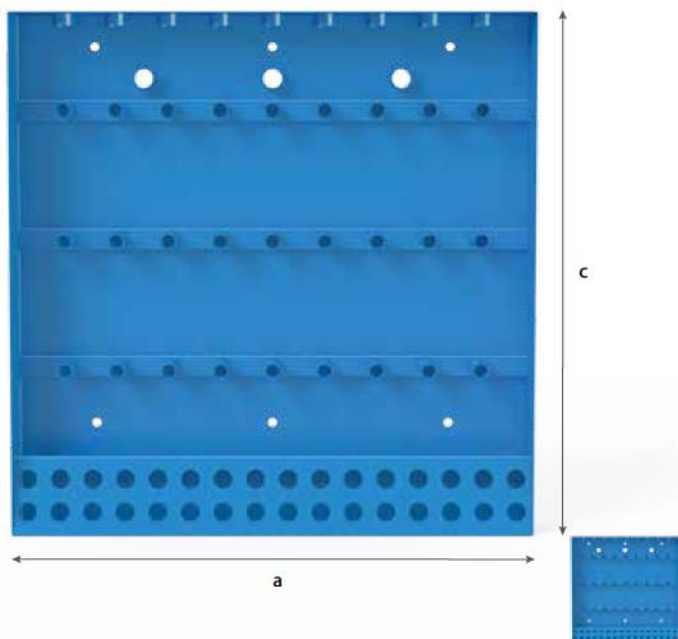
Compact Tool Cart, offers sufficient space for Siegmund accessories. You can always keep track, and all your tools are handy. Large squares are conveniently and safely stored in the internal space. The casters enable quick transportation of the Tool Trolley to where it is needed. In addition, it can be compactly stored below the welding table.



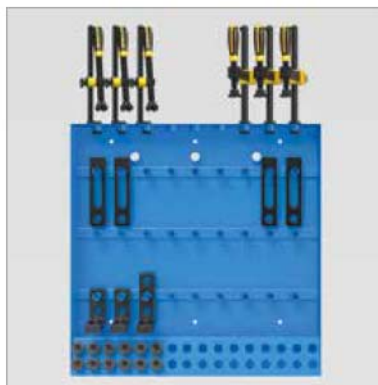
	Length: (a)	Width: (b)	Height: (c)	Weight:	Item No.
Tool Cart Compact - varnished	1000 mm	750 mm	636 mm	59,00 kg	2-280911 ●
Tarp - for Tool Cart Compact 280911					2-280916 ●

● = Stock item / ○ = Item is made to order

Toolwall



280912



Description:

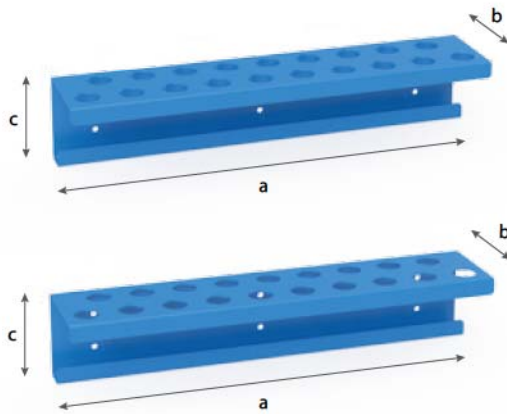
With the Toolwall Siegmund accessories are always within reach quickly. It can easily be bolted to the table, and attached to the wall with screws.

Toolwall
- varnished

Length: (a)	Width: (b)	Height: (c)	Weight:	Item No.
800 mm	100 mm	800 mm	22,50 kg	2-280912 •

• = Stock item / O = Item is made to order

Modular Tool Panel



280930



280931



280936

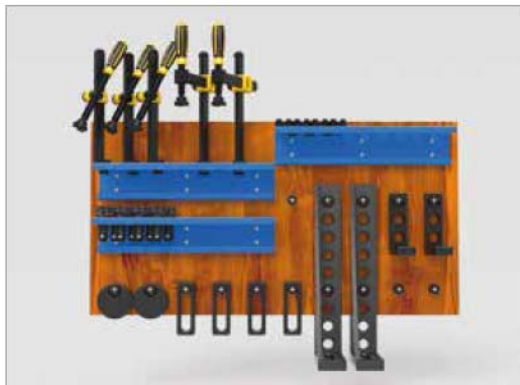
Description:

Modular Tool Panel - create your own personal toolwall by using different components.

The Module 280930 (with System 28 bushing), is suitable for screw clamps, prisms and bolts.

The Module 280931 (without bushing) can only be used with prisms and bolts. By using the pin 280936 you can hang up all components with a drill hole of System 28.

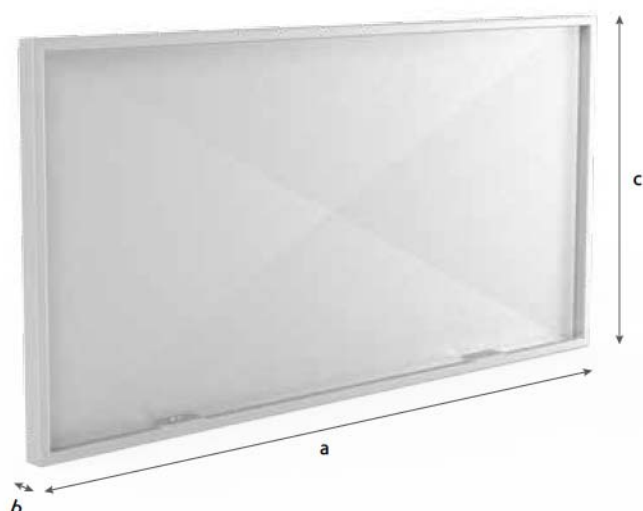
The required back board is not included in delivery. We recommend using a glue-laminated wood board with a thickness of at least 5 cm.



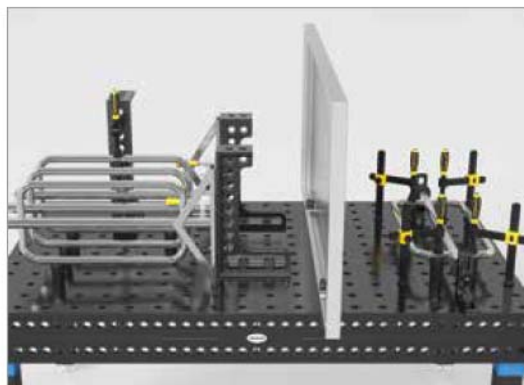
	Length: (a)	Width: (b)	Height: (c)	Ø: (o)	Weight:	Item No.
Module for Tool Wall with Sleeves - varnished	500 mm	110 mm	100 mm	28 mm	3,40 kg	2-280930 ●
Module for Tool Wall without Sleeves - varnished	500 mm	110 mm	100 mm	28 mm	2,80 kg	2-280931 ●
Pin for Toolwall	37 mm			28 mm	0,10 kg	2-280936 ●
Set Module for Tool Wall - consisting of 2x 280930, 2x 280931, 5x 280936.10						2-280930.Set ●

● = Stock item / ○ = Item is made to order

Protective Welding Wall



280980



Description:

Protective Welding Wall, enables dividing the table into two workspaces. Position and size of workspaces are determined by individual requirements.

The Protective Wall protects workspaces that are located next to each other from welding spatters. The Protective Welding Wall is made of zinc coated sheet and is attached with two bolts.

(The Protective Welding Wall is not scratch-proof due to production-related reasons).

Protective Welding Wall
- Custom color varnish available against surcharge

Length: (a)	Width: (b)	Height: (c)	Weight:	Item No.
1600 mm	50 mm	800 mm	23,00 kg	2-280980 ●

● = Stock item / ○ = Item is made to order

Ground Connection Comfort

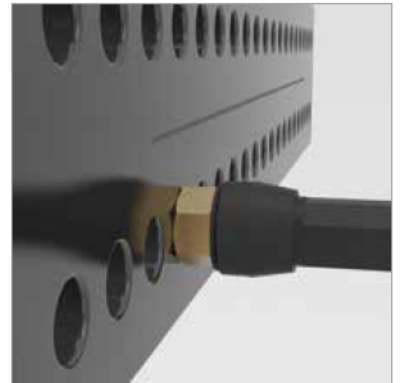
Description:

Ground Connection, guarantees 100% contact to the welding table, therefore no overheating is possible. Simple installation by fastening it in a system bore hole.

Load up to 500 ampere
Cable cross section 70-95 mm²



000810



Ground Connection Comfort

Item No.

2-000810 •

● = Stock item / ○ = Item is made to order

Brush

Description:

Brush with a diameter of 30 mm, especially designed for cleaning 28 mm bore holes. Grime can be removed effortlessly with this brush.



280820

280820.10



Brush Ø 30 with protecting cover
- with protecting cover

Brush Ø 30 for drill bit / 10 piece pack

Ø: (o)	Weight:	Item No.
30 mm	0,06 kg	2-280820 •
30 mm	0,06 kg	2-280820.10 •

● = Stock item / ○ = Item is made to order

Burner Holder

Description:

Burner Holder, can be positioned in each system bore hole and offers an attachment for your welding burner.



280920



Height: (c)	Weight:	Item No.
200 mm	0,50 kg	2-280920 ●

Burner Holder
- Burnished

● = Stock item / ○ = Item is made to order

Allen Wrench 6



280852.1

280852



Description:

Allen Key 6, the practical tool to tighten screws quickly and safely. It is an effective support for working with clamping bolts, screw clamps and small universal squares.



Allen Wrench 6
- yellow

Allen Wrench 6
- red

Weight:

Item No.

0,09 kg

2-280852.1 ●

0,50 kg

2-280852 ●

● = Stock item / ○ = Item is made to order

Allen Wrench 14**Description:**

Allen Wrench 14, used to tighten positioning bolts and large universal squares.



280854

**Allen Wrench 14**

Weight:

0,45 kg

Item No.

2-280854 ●

● = Stock item / ○ = Item is made to order

Shipping Bracket



000830.T1



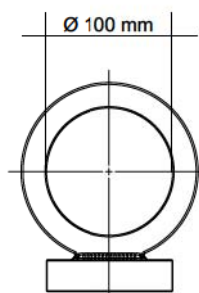
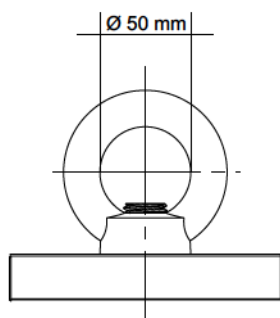
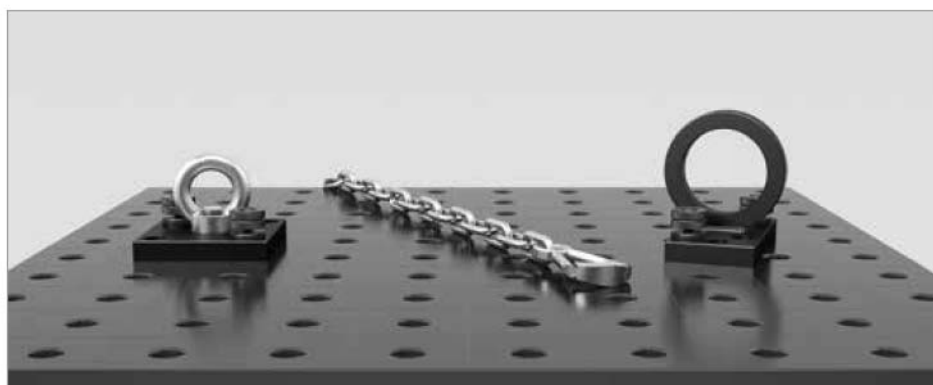
000831



000835



000830



Description:

Shipping Bracket with Mounting Plate, load-bearing capacity 1,800 kg. It is used to transport Siegmund welding tables and other heavy components safely and easily. It is fastened quickly and simply, using at least 2 clamping bolts.

The general rules and regulations for shipping brackets have to be followed while the bracket is in use. Depending on the specific application, the load-bearing capacity can be substantially reduced. During transport, the table must not be raised more than 100 mm, and no one is allowed below the table.

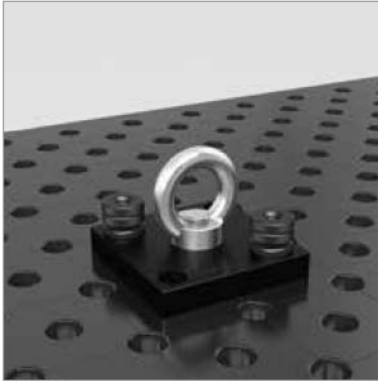
In addition, the Shipping Bracket can be used as a simple attachment for shipping straps.

Please consider following safety instructions: Ring nuts should be completely bolted.

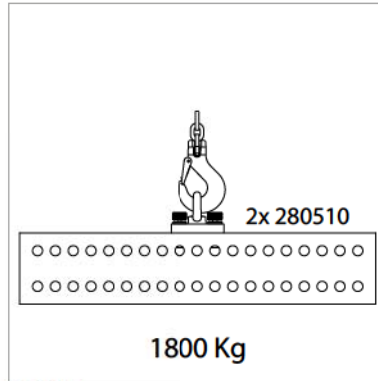
Ring nuts should bear flat and completely on support surface.

Length of mating thread has to be sufficient. Lateral pull should be avoided.

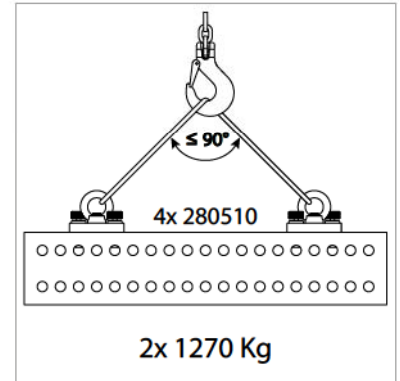




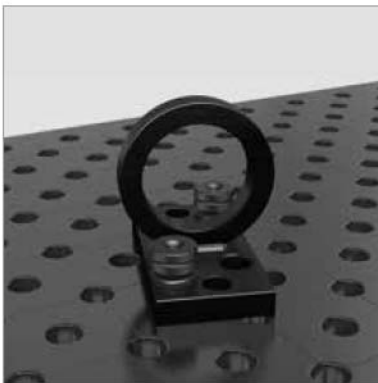
000830



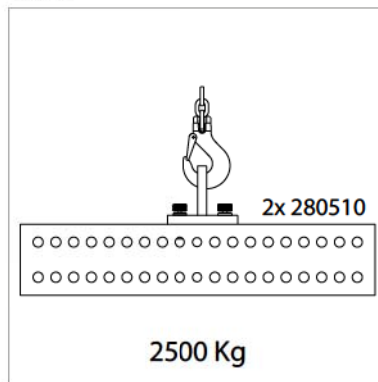
000830



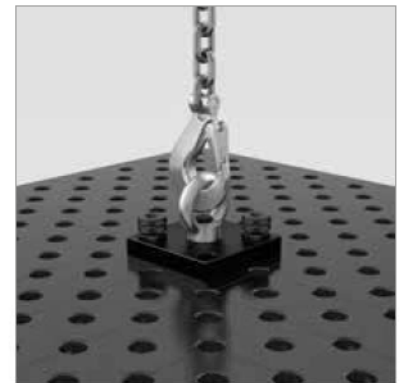
000830



000835



000835



000830

	Length: (a)	Width: (b)	Height: (c)	Weight:	Item No.
Shipping Bracket with Fastening Plate - 1800 kg load-bearing capacity	150 mm	150 mm	25 mm	4,70 kg	2-000830 ●
Mounting Plate, 150x150x25 for Shipping Bracket	150 mm	150 mm	25 mm	3,90 kg	2-000830.T1 ●
Shipping Bracket without Fastening Plate				0,70 kg	2-000831 ●
Shipping Bracket - 2500 kg load-bearing capacity (with 2x 280510) System 28 - 700 kg load-bearing capacity (with 2x 160510) System 16	200 mm	100 mm	165 mm	4,50 kg	2-000835 ●

● = Stock item / ○ = Item is made to order





Supplied By



Surface Technology Products Limited

**244-5 Heneage Street.
Birmingham
B7 4LY
United Kingdom**

**Tel: + 44 (0) 121 359 4322
Fax +44 (0) 121 359 1817**

Email sales@surtech.co.uk