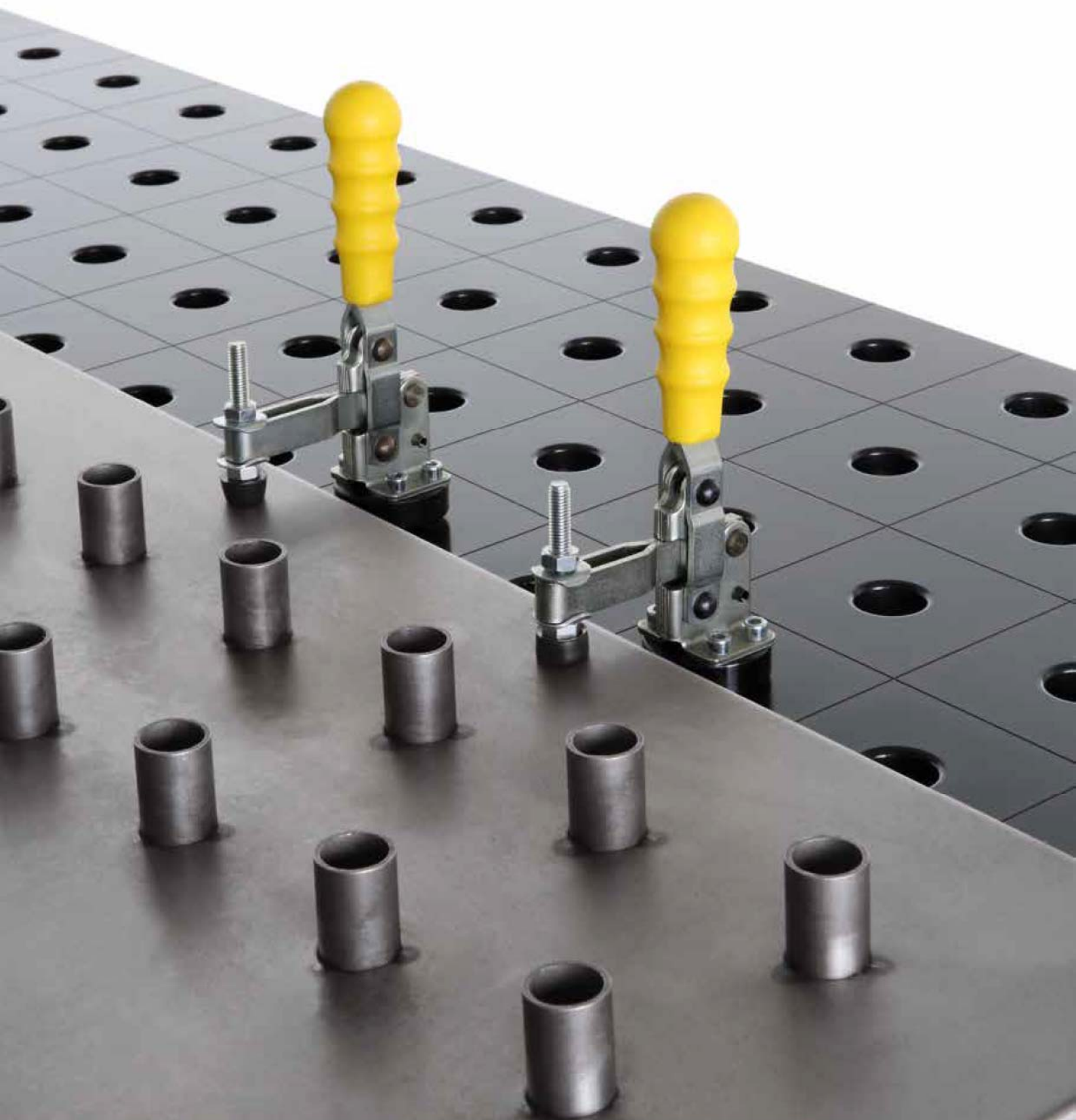


# 28

FAST CLAMPING EQUIPMENT & ADAPTER

Supplied By  
**Surtech**  
Since 2004

**siegmund**



	Page
Vertical Toggle Clamp with Adapter / Horizontal Toggle Clamp with Adapter	368
Quick-Change Clamp 100 / Quick-Change Clamp 160	370
Adapter with Hole Pattern / Adapter Blank without Hole Pattern	372
Combi Adapter / Adapter Plate	374
Adapter Plate 200 / 300	376



## Vertical Toggle Clamp with Adapter



280705



009082

**Description:**

Vertical Toggle Clamp with Adapter, universally usable with 28 mm bore holes. It works most effectively in combination with the Universal Stop (Item No. 280420).

The Adapter is replaceable. Further sizes see page 372.


**Vertical Toggle Clamp with Adapter**  
 - Adapter 280715

Weight:

Item No.

0,73 kg

2-280705 •

**Vertical Toggle Clamp**

2-009082 •

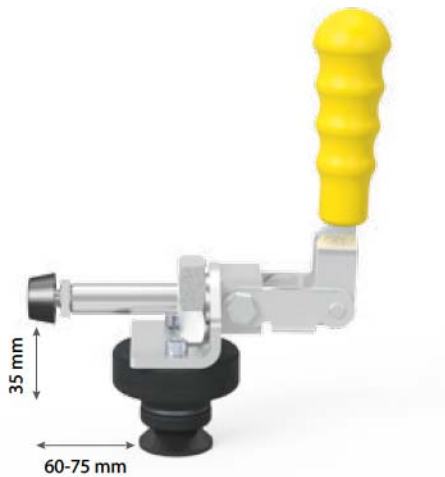
● = Stock item / ○ = Item is made to order

## Horizontal Toggle Clamp with Adapter

### Description:

Horizontal Toggle Clamp with Adapter, universally usable with 28 mm bore holes. It achieves maximum efficiency in combination with Universal Stop Item No. 280420.

The Adapter is replaceable. Further sizes see page 372.



280710



009083



	Weight:	Item No.
<b>Horizontal Toggle Clamp with Adapter</b> - Adapter 280715	0,71 kg	2-280710 ●
<b>Horizontal Toggle Clamp</b>		2-009083 ●

● = Stock item / ○ = Item is made to order

## Quick-Change Clamp 100



280706



### Description:

Vertical tensioner, universally applicable in System 28 boreholes. Clamping range can be set with adjusting screw.



Length: (a)	Width: (b)	Height: (c)	Ø: (o)	Weight:	Item No.
340 mm	30 mm	150 mm	28 mm	1,20 kg	2-280706 ●

**Quick-Change Clamp 100**  
- Length clamping arm 100 mm  
- Clamping range 5-75 mm

● = Stock item / ○ = Item is made to order

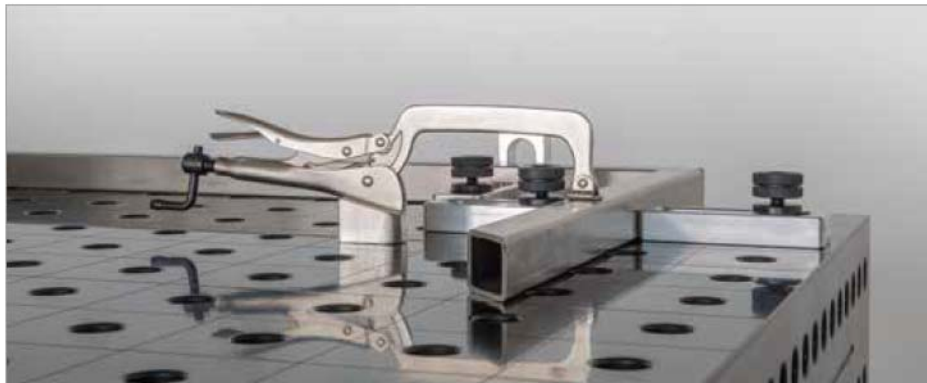
**Quick-Change Clamp 160**

**Description:**

Vertical tensioner, universally applicable in System 28 boreholes. Clamping range can be set with adjusting screw.



280707



**Quick-Change Clamp 160**  
 - Length clamping arm 160 mm  
 - Clamping range 0-75 mm

● = Stock item / ○ = Item is made to order

Length: (a)	Width: (b)	Height: (c)	Ø: (o)	Weight:	Item No.
360 mm	30 mm	150 mm	28 mm	1,20 kg	2-280707 ●



**Adapter with Hole Pattern / Adapter Blank without Hole Pattern**


280715



280715.1



280715.2



280715.3



280720



280720.1



280720.2



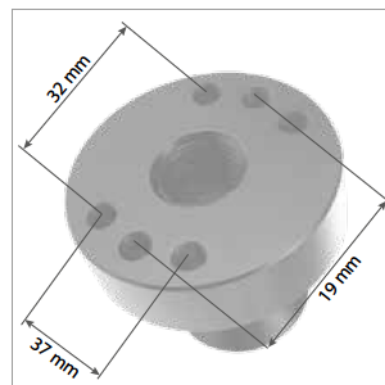
280720.3



280720.4

**Description:**

Adapter with hole pattern, can be used universally with 28 mm bore holes. The integrated O-ring provides the perfect fit.





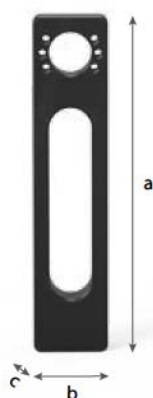
	Height: (c)	Ø: (o)	MS: (d)	Weight:	Item No.
<b>Adapter with Hole Pattern Ø 50 / 15</b> - Burnished	30 mm	50 mm	15 mm	0,30 kg	2-280715 ●
<b>Adapter with Hole Pattern Ø 50 / 40</b> - Burnished	55 mm	50 mm	40 mm	0,56 kg	2-280715.1 ●
<b>Adapter with Hole Pattern Ø 50 / 70</b> - Burnished	85 mm	50 mm	70 mm	1,00 kg	2-280715.2 ●
<b>Adapter with Hole Pattern Ø 50 / 100</b> - Burnished	115 mm	50 mm	100 mm	1,49 kg	2-280715.3 ●
<b>Adapter Blank without Hole Pattern Ø 50 / 15</b> - Burnished	30 mm	50 mm	15 mm	0,30 kg	2-280720 ●
<b>Adapter Blank without Hole Pattern Ø 50 / 5</b> - Burnished	20 mm	50 mm	5 mm	0,11 kg	2-280720.1 ●
<b>Adapter Blank without Hole Pattern Ø 50 / 40</b> - Burnished	55 mm	50 mm	40 mm	0,62 kg	2-280720.2 ●
<b>Adapter Blank without Hole Pattern Ø 50 / 70</b> - Burnished	85 mm	50 mm	70 mm	1,07 kg	2-280720.3 ●
<b>Adapter Blank without Hole Pattern Ø 50 / 100</b> - Burnished	115 mm	50 mm	100 mm	1,50 kg	2-280720.4 ●

MS=Material thickness;

● = Stock item / ○ = Item is made to order



## Combi Adapter 225 / 100



280730



280730.1

**Description:**

Combi-Adapter 225 and 100, specifically designed to serve as an intake for Siegmund quick release clamps. Mounting the quick-change clamps directly onto the Combi-Adapter is especially beneficial for work with low welding components.

In addition, the Combi-Adapter can be used as a conventional universal stop.


**Combi Adapter 225**  
 - Burnished

Length: (a)

Width: (b)

Height: (c)

Weight:

Item No.

225 mm

50 mm

25 mm

1,35 kg

2-280730 ●

**Combi Adapter 100**  
 - Burnished

100 mm

50 mm

25 mm

0,80 kg

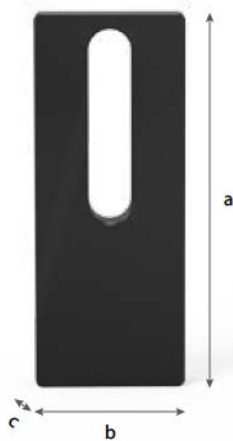
2-280730.1 ●

● = Stock item / ○ = Item is made to order

**Adapter Plate 250 / 350**

**Description:**

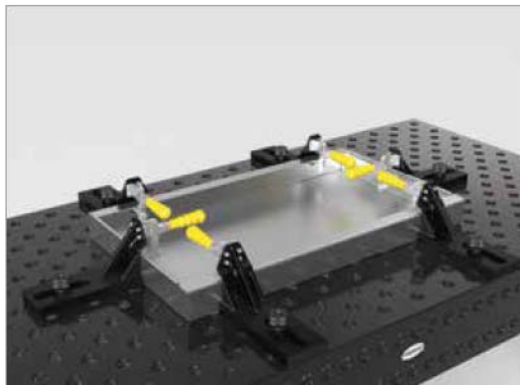
Adapter Plates 250 and 350, developed as blanks for customer specific components and applications. It can be adapted to meet individual requirements. The adjustable range of the oblong slot is 100 and 200 mm.



280731



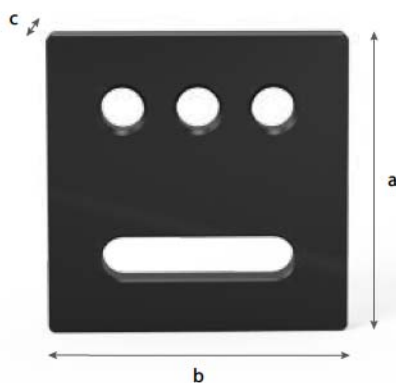
280731.1



	Length: (a)	Width: (b)	Height: (c)	Weight:	Item No.
<b>Adapter Plate 250</b> - Blanks for customer specific components / applications	250 mm	100 mm	25 mm	4,20 kg	2-280731 ●
<b>Adapter Plate 350</b> - Blanks for customer specific components / applications	350 mm	100 mm	25 mm	5,60 kg	2-280731.1 ●

● = Stock item / ○ = Item is made to order

## Adapter Plate 200



280732



280732.1

**Description:**

Burnished Adapter Plate 200, connecting element between welding table and customer's individual components. Both fixed and variable clamping options are a result of the three bore holes and the oblong slot. The adjustable range of the oblong slot is 100 mm.

**Adapter Plate 200**  
- with 28 mm bore holes

Length: (a)    Width: (b)    Height: (c)    Weight:    Item No.

200 mm    200 mm    25 mm    6,70 kg    2-280732 ●

**Adapter Plate 200**  
- without system bore holes

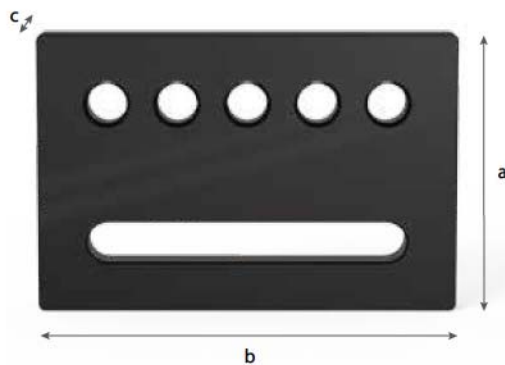
200 mm    200 mm    25 mm    7,10 kg    2-280732.1 ●

● = Stock item / ○ = Item is made to order

**Adapter Plate 300**

**Description:**

Burnished Adapter Plate 300, connecting element between welding table and customer's individual components. Both fixed and variable clamping options are a result of the five bore holes and the oblong slot. The adjustable range of the oblong slot is 200 mm.



280733



280733.1



Customer specific solutions

	Length: (a)	Width: (b)	Height: (c)	Weight:	Item No.
<b>Adapter Plate 300</b> - with 28 mm bore holes	300 mm	200 mm	25 mm	9,80 kg	2-280733 ●
<b>Adapter Plate 300</b> - without system bore holes	300 mm	200 mm	25 mm	10,40 kg	2-280733.1 ●

● = Stock item / ○ = Item is made to order



Supplied By



**Surface Technology Products Limited**

**244-5 Heneage Street.  
Birmingham  
B7 4LY  
United Kingdom**

**Tel: + 44 (0) 121 359 4322  
Fax +44 (0) 121 359 1817**

**Email [sales@surtech.co.uk](mailto:sales@surtech.co.uk)**