

# 28

TABLE LEGS

Supplied By

**Surtech**  
Since 2004

**siegmund®**



	Page
Table Legs	150
Leg Standard equipment	152
Leg height-adjustable	154
Leg with Caster and Locking Brake / Leg height-adjustable with Caster and Locking Brake	156
Leg with Floor Anchoring	158
Fastening Plate with Caster / Base Plate	160
Hydraulic Lift	162



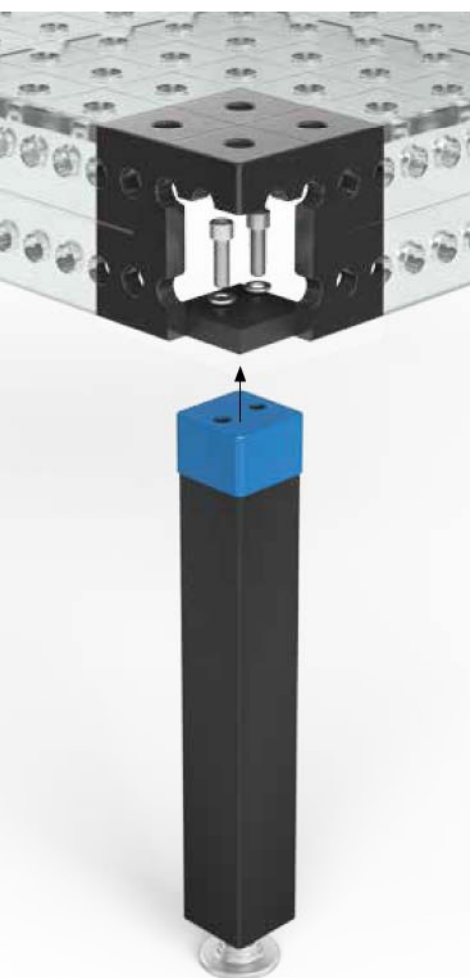
### Table Legs

#### INSTALLATION TABLE LEGS:

Per table leg two cylinder bolts with spring rings are inserted in the mounting panel. Afterwards the table leg is bolted at a torque of 150 Nm.

Screws are included in delivery.

Please follow enclosed installation instructions.



#### LEG STANDARD EQUIPMENT

Page 152

##### STYLES

650  
750  
Special Sizes



Bearing load  
per leg:  
2,000 kg



Bearing load  
per leg:  
2,000 kg

#### LEG HEIGHT-ADJUSTABLE

Page 154

##### STYLES

450-700  
550-900  
Special Sizes



Bearing load  
per leg:  
2,000 kg



Bearing load  
per leg:  
2,000 kg

#### LEG WITH CASTER AND LOCKING BRAKE

Page 156

##### STYLES

650  
Special Sizes



Bearing load  
per leg:  
800 kg

#### LEG HEIGHT-ADJUSTABLE WITH CASTER AND LOCKING BRAKE

Page 157

##### STYLES

550-750  
Special Sizes



Bearing load  
per leg:  
800 kg

#### LEG WITH FLOOR ANCHORING

Page 158

##### STYLES

650  
750  
Special Sizes



Bearing load  
per leg:  
2,000 kg



Bearing load  
per leg:  
2,000 kg

Table legs not for Basic tables.



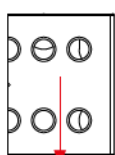
### BEARING LOAD PER LEG

The maximum bearing load per leg in system 28 is max. 800-2.000 kg for all tables depending on the leg type.

Computationally resulting in substantially higher overall loads. However, the indicated bearing loads were calculated with reserves for safety reasons.

Please consult with manufacturer, if higher overall loads are required.

### FOR MAXIMUM SECURITY:



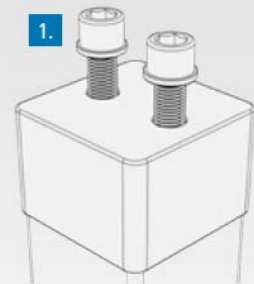
Allowable bearing load:

Vertical force direction:  
20 kN



Horizontal force direction:

2 kN  
Maximum stability ensured by  
large section tube (90x90 mm).



### 1. ALLEN SCREW

- with M16 thread
- with lockwasher for security

### 2. SLEEVE

Professional Extreme 850 design used as a distinguishing feature

### 3. MATERIAL

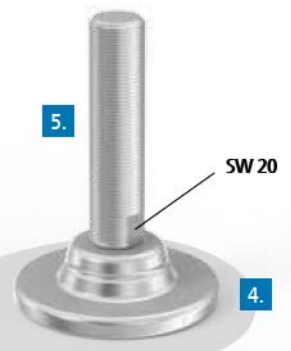
- sturdy square pipe 90x90 mm
- for increased stability
- powder coated

### 4. BASE PLATE

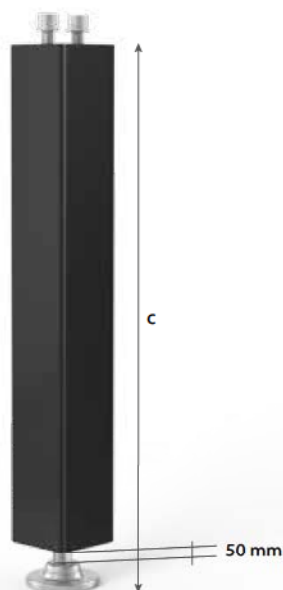
- Ø 90 mm
- for optimum pressure distribution
- made of twisted bulk material
- for increased stability and precision

### 5. THREADED ARBOR

- with sturdy M24x1.5 fine thread (pitch 1.5 mm)
- 50 mm vernier adjustment
- with locknut for security



## Leg Standard equipment



280858.X

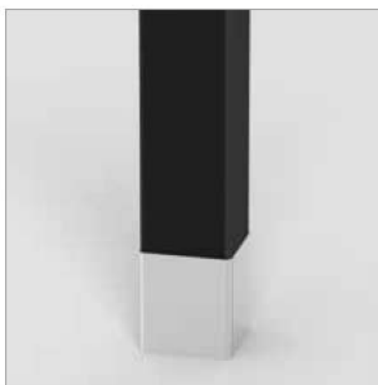
280857.X

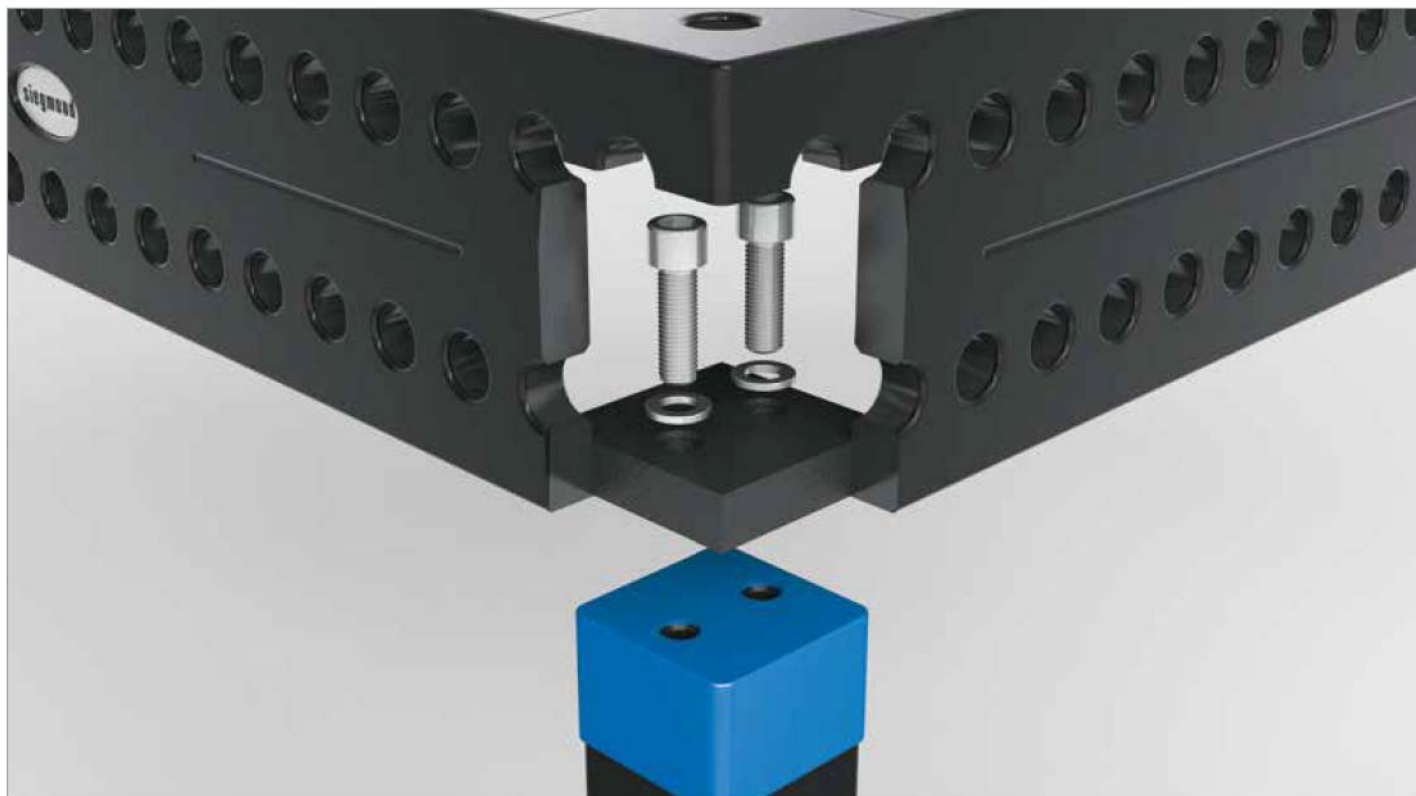
280859

### Description:

Standard Leg, available in various lengths (special lengths upon request). Load-bearing capacity 2,000 kg, adjustable up to 50 mm (vernier adjustment).

Leg Boot protects threaded arbor from dirt and prevents damages to the welding hose, due to the constant contact with the threaded arbor.





	Length: (a)	Width: (b)	Height: (c)	Weight:	Item No.
<b>Leg Standard equipment 650</b> - 50 mm vernier adjustment	90 mm	90 mm	650 mm	8,50 kg	2-280858.X ●
<b>Leg Standard equipment 750</b> - 50 mm vernier adjustment	90 mm	90 mm	750 mm	9,00 kg	2-280857.X ●
<b>Leg Standard, special height min. 150 mm</b> - 50 mm vernier adjustment	90 mm	90 mm			2-280856.XS ○
<b>Further sizes and heights available upon request</b>					○
<b>Sleeve for Table Leg</b> - for Leg Standard / Floor anchoring	95 mm	95 mm	100 mm	0,45 kg	2-280859 ●

● = Stock item / ○ = Item is made to order

Table legs not suitable for Basic tables.

## Leg height-adjustable



280878.X

280877.X

280859.1

### Description:

Leg is height adjustable in a range of 450-700 mm or 550-900 mm. The load-bearing capacity remains 2,000 kg, regardless of height. A second lock bolt ensures additional stability. The leg can be vernier adjusted up to 50 mm.

Leg Boot protects threaded arbor from dirt and prevents damages to the welding hose, due to the constant contact with the threaded arbor.







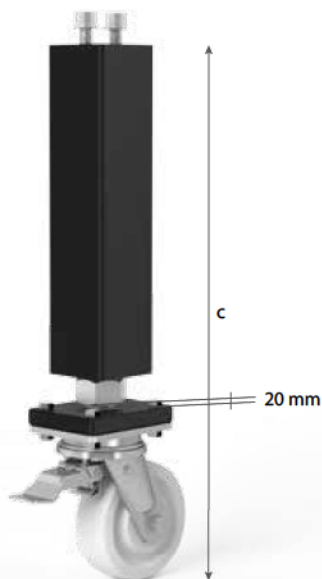
	Length: (a)	Width: (b)	Height: (c)	Weight:	Item No.
<b>Leg height-adjustable 450-700</b> - 50 mm vernier adjustment - Table height 650-900 mm adjustable	90 mm	90 mm	450-700 mm	9,20 kg	2-280878.X ●
<b>Leg height-adjustable 550-900</b> - 50 mm vernier adjustment - Table height 750-1100 mm adjustable	90 mm	90 mm	550-900 mm	11,00 kg	2-280877.X ●
<b>Additional sizes upon request</b>					○
<b>Sleeve for Table Leg</b> - powder coated - for Leg height-adjustable	80 mm	80 mm	100 mm	0,45 kg	2-280859.1 ○

● = Stock item / ○ = Item is made to order

Table legs not suitable for Basic tables.



## Leg with Caster and Locking Brake



280876.X



### Description:

Leg with Caster and Locking Brake, load-bearing capacity 800 kg per caster. Each leg can be height-adjusted up to 20 mm (vernier adjustment), by turning the spacer plate and is equipped with a reinforced arbor.

### Leg with Caster and Locking Brake 650 - 20 mm vernier adjustment

Length: (a)	Width: (b)	Height: (c)	Weight:	Item No.
90 mm	90 mm	650 mm	9,00 kg	2-280876.X ●

Additional sizes upon request

○

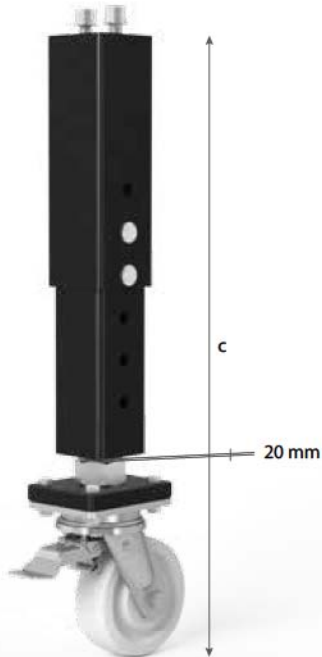
● = Stock item / ○ = Item is made to order

Table legs not suitable for Basic tables.

**Leg height-adjustable with Caster and Locking Brake**

**Description:**

Leg height-adjustable with Caster and Locking Brake, load-bearing capacity 800 kg and vernier adjustable up to 20 mm.



280879.X

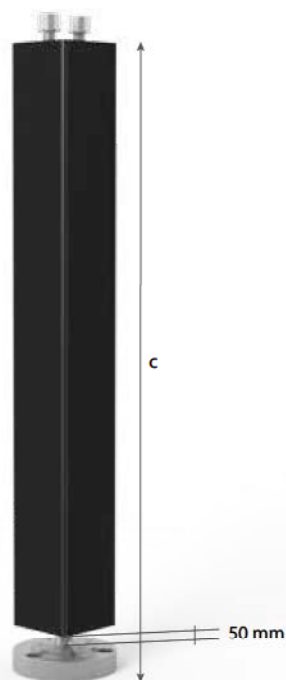


	Length: (a)	Width: (b)	Height: (c)	Weight:	Item No.
<b>Leg height-adjustable with Caster and Locking Brake 550-750</b>					
- 20 mm vernier adjustment	90 mm	90 mm	550-750 mm	11,00 kg	2-280879.X ●
- Table height 750-950 mm adjustable					
<b>Additional sizes upon request</b>					○

● = Stock item / ○ = Item is made to order

Table legs not suitable for Basic tables.

## Leg with Floor Anchoring



280874.X

280875.X



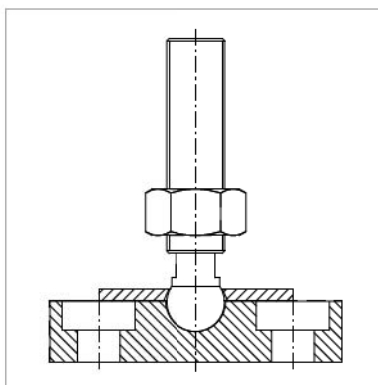
280868

280859

### Description:

Leg with floor anchoring, load-bearing capacity of 2,000 kg and suitable for all applications that demand stability. Leg is adjustable up to 50 mm (vernier adjustment).

Leg Boot protects threaded arbor from dirt and prevents damages to the welding hose, due to the constant contact with the threaded arbor.



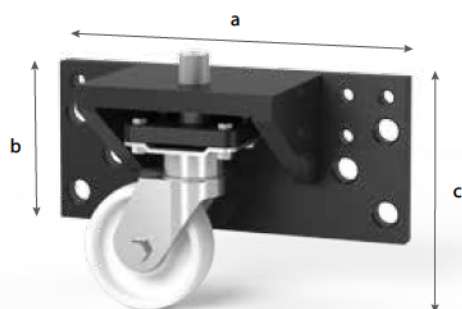


	Length: (a)	Width: (b)	Height: (c)	Ø: (o)	Weight:	Item No.
<b>Leg with Floor Anchoring 650</b> - 50 mm vernier adjustment	90 mm	90 mm	650 mm		8,50 kg	2-280874.X ●
<b>Leg with Floor Anchoring 750</b> - 50 mm vernier adjustment	90 mm	90 mm	750 mm		9,00 kg	2-280875.X ●
<b>Additional sizes upon request</b>						○
<b>Plate for Floor Anchoring</b> - Interchangeable with base plate for leg standard equipment and leg height adjustable.				130 mm	3,00 kg	2-280868 ●
<b>Heavy- Duty Bolt</b> - 1 set = 3 screws + 3 studs					0,40 kg	2-280869 ●
<b>Sleeve for Table Leg</b> - for Leg Standard / Floor anchoring	95 mm	95 mm	100 mm		0,45 kg	2-280859 ●

● = Stock item / ○ = Item is made to order

Table legs not suitable for Basic tables.

## Fastening Plate with Caster



280867



### Description:

Fastening Plate, enables mobility of tables with low design height. The hexagon socket on top of the arbor enables height adjustment.

**Fastening Plate with Caster**  
- 50 mm vernier adjustment  
- for work table system 28 and 16

Length: (a)	Width: (b)	Height: (c)	Weight:	Item No.
450 mm	205 mm	300 mm	36,00 kg	2-280867 ○

● = Stock item / ○ = Item is made to order

### Base Plate

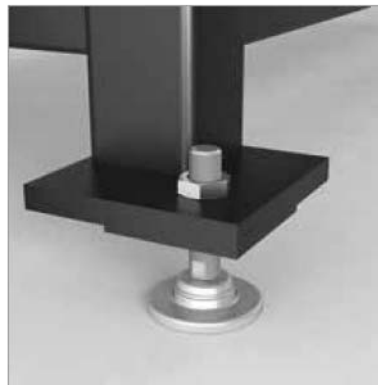
**Description:**

**Base Plate, especially designed for the connection frame, to enable its use outside of the rail system. It can also be used in all system 28 tables. Legs have base plates with system 28 bore holes, when used in combination with Professional Tables. (Please specify when ordering)**



280855.X

160855.X



	Height: (c)	Ø: (o)	Weight:	Item No.
<b>Base Plate</b> - for connecting frame - 50 mm vernier adjustment - M24x1.5 thread for vernier adjustment	130 mm	90 mm	1,00 kg	2-280855.X ●
<b>Base Plate</b> - for system 28 welding table - 40 mm vernier adjustment - M16x1.5 thread for vernier adjustment	100 mm	70 mm	0,40 kg	2-160855.X ●

● = Stock item / ○ = Item is made to order

## Hydraulic Lift



### Description:

Hydraulic Lift, facilitates quick and smooth height adjustment of welding- and clamping tables. Consequently, it simplifies handling of large work pieces.

Additional bearing loads and options in special sizes are available upon request.

Cable length for feed cable and operation unit is 3 m each. Basic height of Hydraulic Lift equals its minimum height. Maximum height results from basic height plus specified effective stroke. Height specifications refer to lifting platform without table.





	Length: (a)	Width: (b)	Height: (c)	Weight:	Item No.
<b>Hydraulic Lift</b> - for Work Table 280010 - load-bearing capacity 1,000 kg / effective stroke 925 mm	990 mm	990 mm	235 mm	210,00 kg	0-289084 ○
<b>Hydraulic Lift</b> - for Work Table 280025 - load-bearing capacity 1,000 kg / effective stroke 700 mm	1190 mm	790 mm	200 mm	270,00 kg	0-289905 ○
<b>Hydraulic Lift</b> - for Work Table 280015 - load-bearing capacity 2,000 kg / effective stroke 700 mm	1190 mm	1190 mm	200 mm	300,00 kg	0-289239 ○
<b>Hydraulic Lift</b> - for Work Table 280035 - load-bearing capacity 2,000 kg / effective stroke 800 mm	1490 mm	990 mm	200 mm	450,00 kg	0-289132 ○
<b>Hydraulic Lift</b> - for Work Table 280050 - load-bearing capacity 2,000 kg / effective stroke 800 mm	1490 mm	1490 mm	280 mm	530,00 kg	0-289088 ○
<b>Hydraulic Lift</b> - for Work Table 280020 - load-bearing capacity 2,000 kg / effective stroke 1,000 mm	1990 mm	990 mm	230 mm	580,00 kg	0-289085 ○
<b>Hydraulic Lift</b> - for Work Table 280060 - load-bearing capacity 2,000 kg / effective stroke 1,000 mm	1990 mm	1190 mm	280 mm	800,00 kg	0-289893 ○
<b>Hydraulic Lift</b> - for Work Table 280045 - load-bearing capacity 3,000 kg / effective stroke 1,000 mm	1990 mm	1990 mm	350 mm	900,00 kg	0-289897 ○
<b>Hydraulic Lift</b> - for Work Table 280030 - load-bearing capacity 2,000 kg / effective stroke 1,300 mm	2390 mm	1190 mm	280 mm	800,00 kg	0-289367 ○
<b>Hydraulic Lift</b> - for Work Table 280040 - load-bearing capacity 3,000 kg / effective stroke 1,600 mm	2990 mm	1490 mm	350 mm	1200,00 kg	0-289087 ○
<b>Hydraulic Lift</b> - for Work Table 280055 - load-bearing capacity 5,000 kg / effective stroke 1,600 mm	3990 mm	1990 mm	460 mm	2200,00 kg	0-289089 ○

● = Stock item / ○ = Item is made to order

For technical reasons height is subject to change.



Supplied By



**Surface Technology Products Limited**

**244-5 Heneage Street.  
Birmingham  
B7 4LY  
United Kingdom**

**Tel: + 44 (0) 121 359 4322  
Fax +44 (0) 121 359 1817**

**Email [sales@surtech.co.uk](mailto:sales@surtech.co.uk)**